







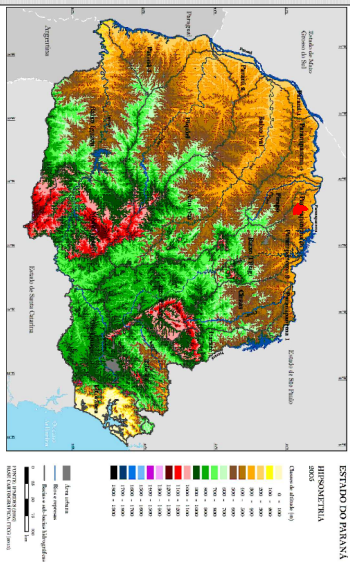


LEGENDA

-  LIMITE MUNICIPAL DE CAFEARA
 -  RIOS E CÔRREGOS
 -  RODOVIAS ESTADUAIS
 -  ESTRADA DE TERRA
- CLASSES DE ALTITUDE:**
-  CURVA 200 M
 -  CURVA 300 M
 -  CURVA 400 M
 -  CURVA 500 M



Fonte de dados:

ITCG - Dados geospaciais de referência - Cartas Topográficas - Curvas de Nível 1:250,000 (IPARDES 2005) | Divisão Político-Administrativa do Paraná - 2017
 - Dados e Informações geospaciais temáticos - Recursos Hídricos - Hidrografia 1:250,000

IPARDES

VEGONINTE - Rodovias Estaduais

GoogleMaps

Prefeitura de Cafeara - Plano Diretor 2005; Lei Ordinária 368/2011 Lei do (Perímetro Urbano)

MUNICÍPIO DE CAFEARA

PLANO DIRETOR MUNICIPAL

MAPA DE HIPSOMETRIA

SEDE MUNICIPAL

Data: 11/2017
 Escala: 1:55,000

Consultoria contratada:

MB Consultoria e Planejamento

Responsável Técnico:

MARCIA BOUNASSAR

CAU A11950-4

Equipe Técnica:

CAROLINA MALAQUE

CAU 189430-1